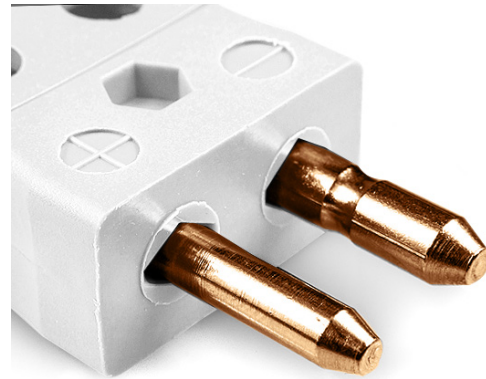
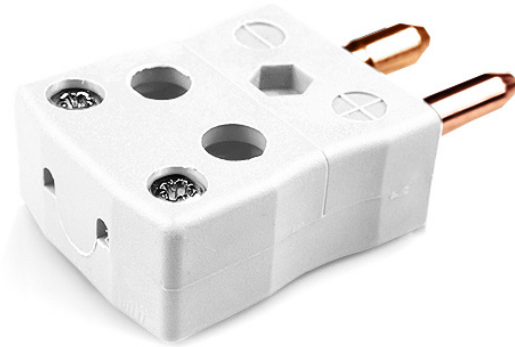


Conector de termopar de cable rápido estándar Enchufe FSTC-CU-MQ Tipo Cu



Standard in-line Plug - Quick Wire
(dimensions in mm)

Labfacility are the UK's leading manufacturer of Temperature Sensors, Thermocouple Connectors and associated Temperature Instrumentation and stockings of Thermocouple Cables. The Company has been trading since 1971 and is ISO9001 accredited.

Conector de termopar de cable rápido estándar enchufe FSTC-CU-MQ Tipo CU

Fácil conexión 'jab-in' para una terminación rápida, simplemente empuje el cable y apriete el tornillo. Los contactos están polarizados para evitar una conexión incorrecta

Especificaciones**Specifications**

Product Code	XE-1681-001
General Description	Easy 'jab-in' connection for rapid termination, contacts are polarised to prevent incorrect connection.
Thermocouple Type	IEC, ANSI, JIS Type CU
Connector Type	Quick Wire Plug
Connector Size	Standard
Colour	White
Max. Temperature	220°C
Pins	Solid Round Pins
+Positive Contact	Copper
-Negative Contact	Copper
Standards Met	BS EN 50212:1997. RoHS